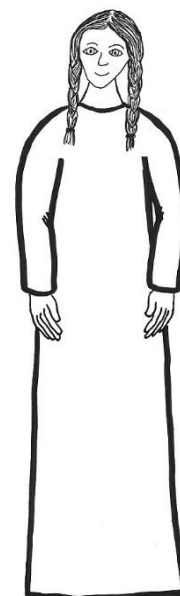


$\frac{24}{4} \frac{16}{2} \frac{22}{1} \frac{18}{18}$, Maria

$\frac{12}{8} \frac{11}{14} \frac{18}{20} \frac{8}{8}$ plná

Pán s $\frac{20}{5} \frac{3}{14} \frac{21}{21}$;



$\frac{15}{14} \frac{25}{5} \frac{7}{13} \frac{1}{13} \frac{2}{2}$ ty mezi ženami

a požehnaný $\frac{15}{11} \frac{14}{4}$ života tvého, Ježíš.

$\frac{18}{22} \frac{1}{20} \frac{2}{2}$ Maria, $\frac{12}{1} \frac{20}{10} \frac{14}{14}$ Boží,

pros za nás $\frac{7}{17} \frac{9}{19} \frac{13}{6}$

$\frac{13}{23} \frac{13}{9}$ i v hodinu $\frac{18}{12} \frac{16}{20} \frac{8}{8}$ naší. Amen.

MARIA JE ŽENA, KTERÁ...

$\frac{24}{5} \frac{11}{1} \frac{22}{1} \frac{17}{8} \frac{11}{1} \frac{3}{14} \frac{7}{21}$ C Ě